

Wohnung **20**

4. OG

Diele 10,511 m²

Wohnen / Essen / Kochen 39,38 m²

Kind 1 12,38 m²

Kind 2 11,33 m²

Schlafen 16,40 m²

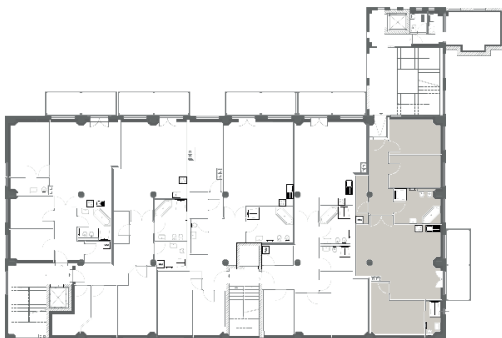
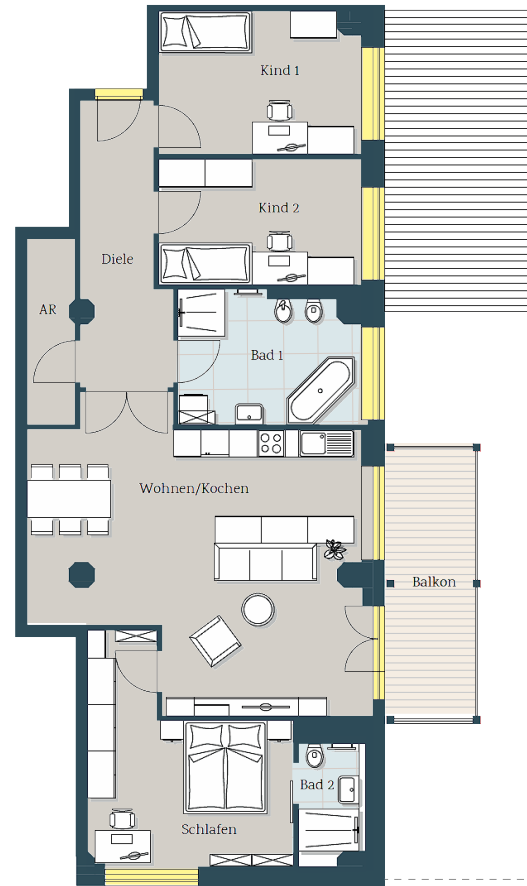
Bad 1 10,41 m²

Bad 2 3,21 m²

AR 4,12 m²

Balkon 50% 6,72 m²

Gesamt 113,46 m²



20/4.OG

Westansicht

